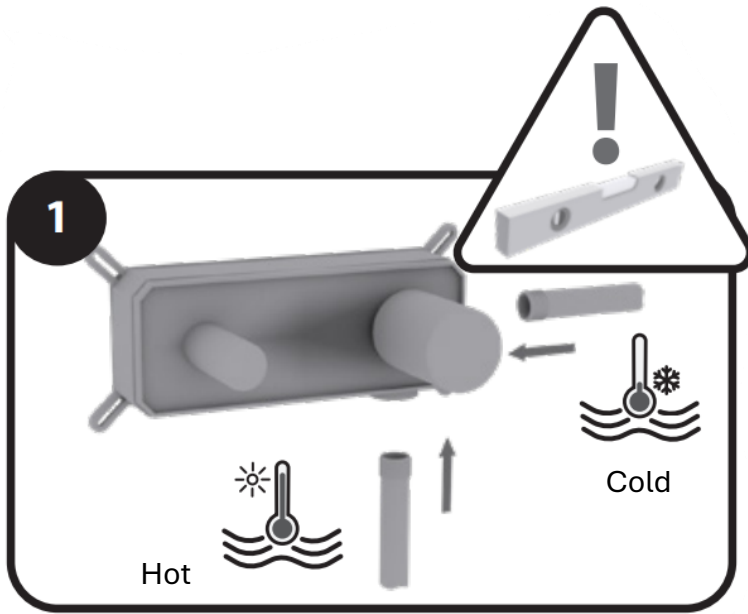
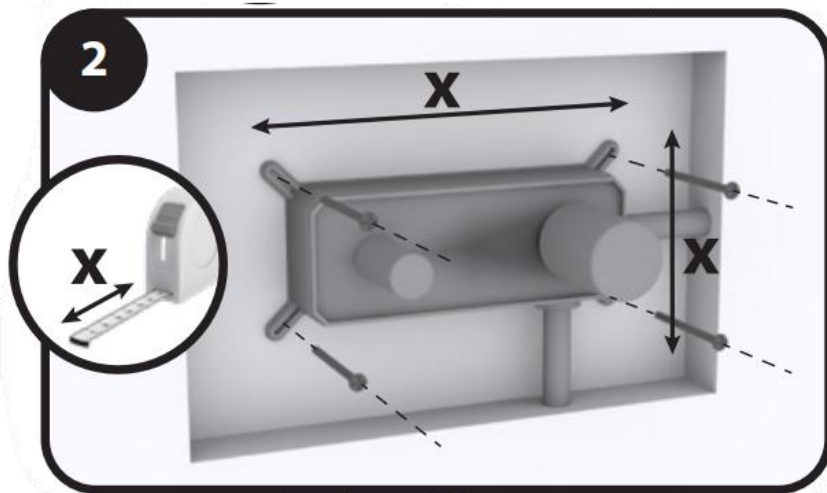


Waterproof Box installation for Evoke Wall Mounted Basin Mixer with Spout



PLEASE NOTE:
Evoke Basin Mixer with Spout comes with a Waterproof Box like below. **WHITE COVER MUST BE REMOVED** BEFORE WALL LINING OR TILING.

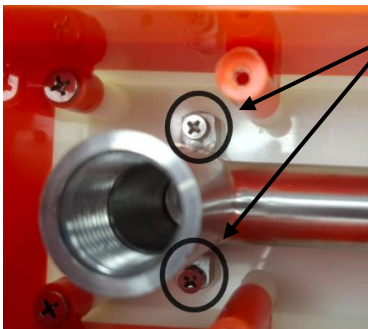


Measure where the Waterproof box needs to be installed – ensuring allowance for tiles over the waterproof box.

Trim back waterproof box to depth required.

Ensure Waterproof box is 100% level.

Secure Waterproof Box to solid fixings.

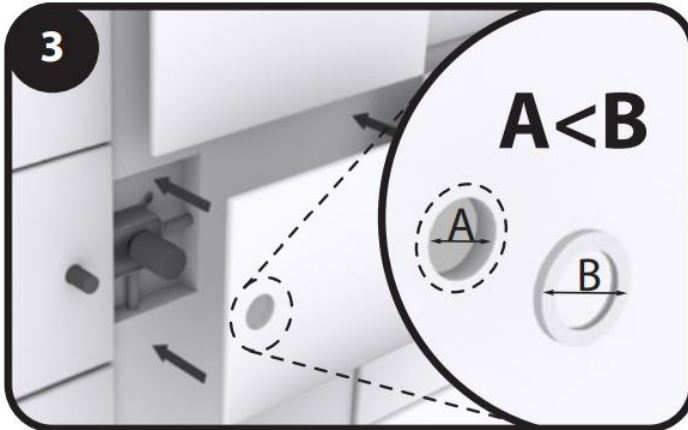


We recommend these screws to be removed and replaced with longer screws onsite and secured to solid fixings to prevent the spout from moving over time.

Once the Waterproof Box is installed, please proceed with checking the fittings as per normal plumbing process.



You are ready for Tiling. Remember to **remove** the White Waterproof Cover **before** Tiling.

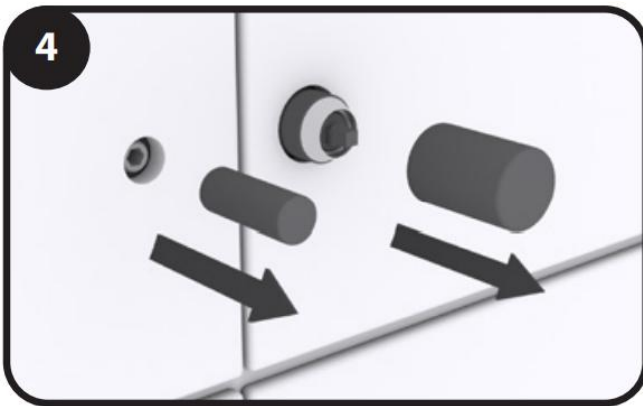


Remember when cutting holes in tiles to be **aware** of the Faceplate size.

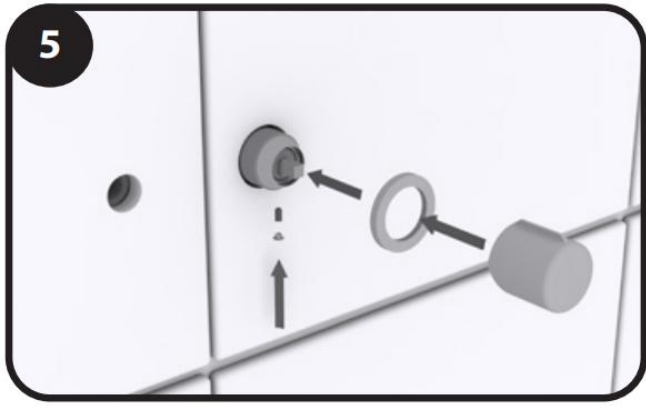
Tile holes need to be less than the internal faceplate diameter.

We recommend protecting the Mixer Body and Spout area with some bubble wrap or foam during tiling to avoid damage.

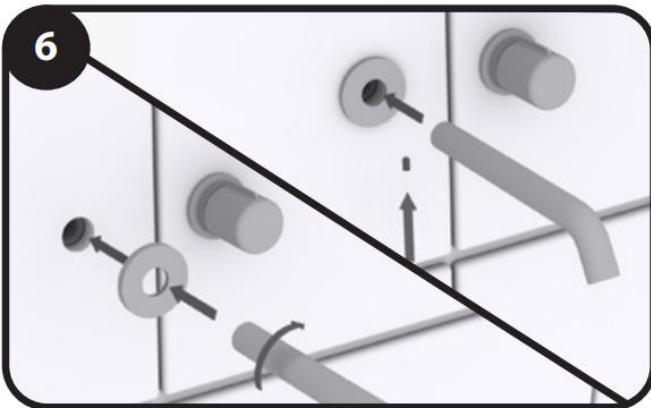
Ensure it is easy enough to remove once tiled.



Remove protection from Mixer Body and Spout.



Install Mixer Face Plate and handle as required.



Install Spout as required. Tighten. Please note this spout is a swivel spout.

Test and check as per normal plumbing processes.



Enjoy your Evoke Wall Mounted Basin Mixer and Spout.