

# SPECIFICATION SHEET

## TORO 632MM ROUND HEATED TOWEL BAR



### Features

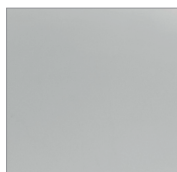
- Round Heated Towel Bar
- 17W
- 201 Grade Stainless Steel (Chrome & Matte Black)  
304 Grade Stainless Steel (Brushed Nickel)
- Chrome, Brushed Nickel, Matte Black, Gunmetal, Brushed Brass, Brushed Copper & Matte White finishes
- Left and Right hand concealed wiring
- Wiring kits included
- Dimensions: W632 X D100
- Bar Thickness: 32mm

*\*12V Transformer is required for installation*

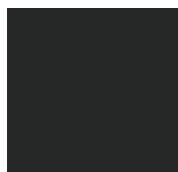
Transformer options: LT050 (20-70 watts)  
LT051 (35-105 watts)

Installation: In wall pre-wiring and solid timber internal wall fixing prior to installation. Recommended for mounting on hard surfaces, such as tile walls.

### Colour Options with Code



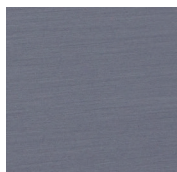
Chrome  
SR240



Matte Black  
SR240B



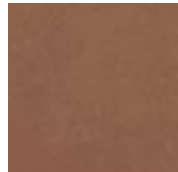
Brushed Nickel  
SR240NK



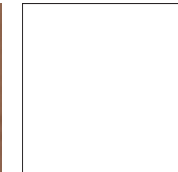
Gunmetal  
SR240GM



Brushed Brass  
SR240BB



Brushed Copper  
SR240CP



Matte White  
SR240MW

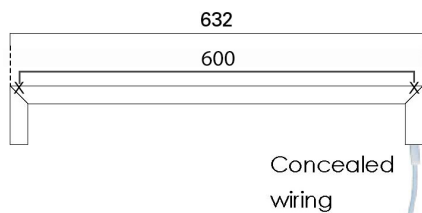
### Technical Details

Note: All measurements shown are in millimetres. Sizes are nominal.

FRONT VIEW



TOP VIEW



Newtech heated towel rails are designed for NZ bathrooms. These are tested to ensure they meet the high product standards set by Australia and New Zealand AS/NZS 60335.



Our 10 years warranty offers our customers peace of mind knowing our products are free of defects, both in materials and workmanship. Colour finishes - Matte Black & Gunmetal 5 Year warranty.



Our Newtech freedom range of heated towel rails come with a 12V rating for use in Zone 1. This allows you to position your towel rail almost anywhere in your bathroom.



The installation of your towel rail must be performed by a registered electrician. Installation is to comply with AS/NZS 60335 Safety Standards.



Can be used in conjunction with a timer.



Manufactured from high quality durable stainless steel.