

# Bathroom Zones

## New Zealand Electrical IP Zones

All heated towel rails purchased from Newtech must be installed by a registered electrician.

IP bathroom zones are determined by AS/NZS 3000:2018 and are identified on the diagrams below.

IP45 heated towel rails can be installed in Zone 2, whereas 12V heated towel rails can be installed in Zone 1, which offers the flexibility of installing almost anywhere in your bathroom.

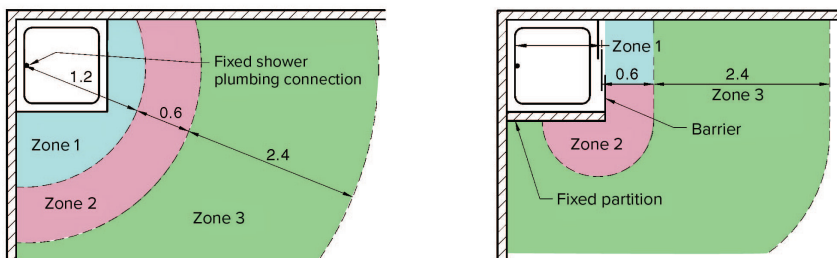
The diagrams below illustrate the IP electrical zones in certain bathroom settings and provide a general guide only of where a heated towel rail may be installed.

Every bathroom will have a unique layout and will usually vary in some way from these diagrams. The installing registered electrician will be required to certify the compliance of the installation and will therefore need to inspect the actual location and consider the layout including its water sources (taps, and showers etc.) and the proximity of the warmer to direct contact with water from these sources.

### New Zealand Bathroom Zones

#### Enclosed Shower

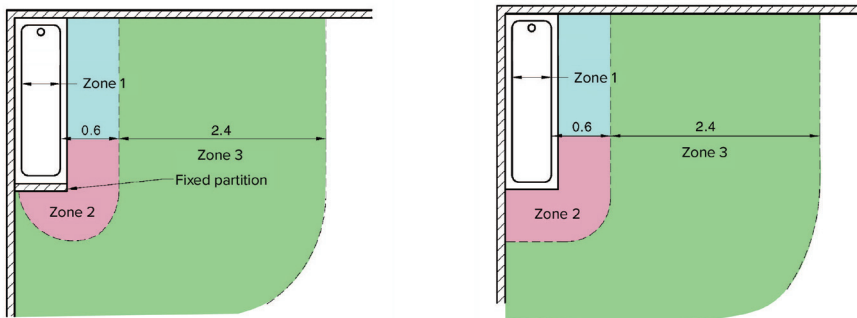
For guidance only. Refer to AS/NZS 3000:2018 for detail



### New Zealand Bathroom Zones

#### Bath Only

For guidance only. Refer to AS/NZS 3000:2018 for detail



### New Zealand Bathroom Zones

#### Fixed Shower over bath without screens

For guidance only. Refer to AS/NZS 3000:2018 for detail

