



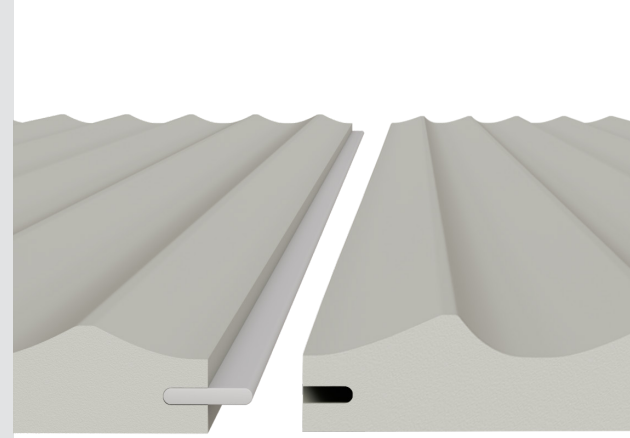
**INNOWALL  
PANELS**

BY NEWTECH

**INSTALLATION  
INSTRUCTIONS**

## InnoWall panels are designed for interior wall & ceiling spaces in no-splash zones.

Made from 12mm moisture resistant fibreboard (MDF), each panel is designed with an interlocking system and is pre-primed ready for painting.



## Important

Innowall Panels must be acclimatised in the installation environment and must be stored **for at least 48 hours before installing**. This allows the panels to adjust to the temperature and humidity, helping prevent shrinkage or warping after they are fitted.

Ensure the installation area is well-ventilated, especially when installing onto timber substrates, to allow the panels to breathe. Failure to follow these steps may result in movement such as expansion or contraction and will void the product warranty.

InnoWall Panels are designed for fixed interior walls and ceiling applications in dry, no-splash zones. They are not suitable for flooring, sliding doors, cabinetry or any exterior areas. Do not install panels over existing timber panelling, hardboard, tiles, cork, stone, textiles or wallpaper. Installation should only be carried out on surfaces and areas specially outlined in these instructions.

We recommend that a qualified tradesperson install this product and that it is installed to a professional standard. This product carries a 7-year warranty against faulty workmanship and materials.

## Before You Begin

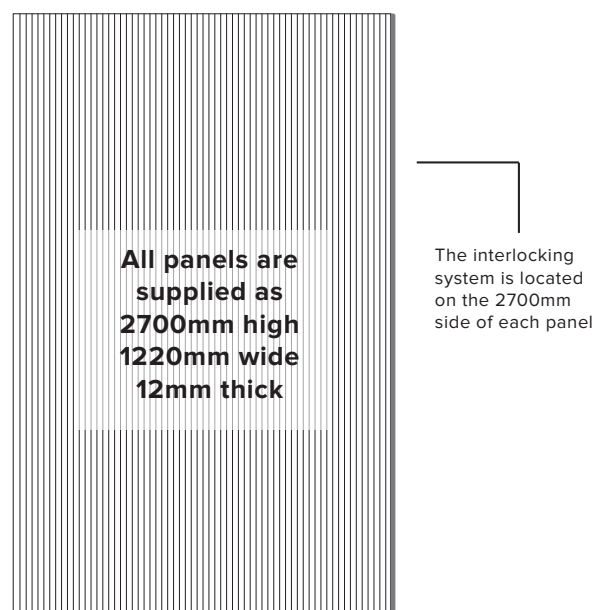
### ALL PANELS MUST BE INSPECTED FOR DAMAGE BEFORE INSTALLING

Before you get started, we recommend that you always wear personal protective equipment when handling and cutting this product. Always wear work gloves, dust mask, eye protection, safety footwear and suitable workwear.

You will also need the following tools:

- Tape measure & Spirit level
- Builders pencil
- 10mm spacers
- Stud finder
- Circular saw, Jigsaw, Drill
- Nail gun or hammer
- Screws and/or nails
- Building adhesive
- Putty, putty knife & sanding sponge

Minor modifications to wall frames and studs may be required before installation.



# Design Guidelines, Installation & Finishing Tips

---

Before you start your project you should consider the following aspects:

- Plan if your space will need to work around windows, doors or openings or if you have future plans for creating new openings. Ensure that the area is well ventilated. InnoWall panels are versatile and can be used in a horizontal or vertical position. Make sure you plan your area so you know exactly where the panels will join with the interlocking system.
- Check if there are any electrical outlets, switches, appliances, or vents in the area. If you need to cut into the panels, make sure the cut-outs have rounded corners with a 10mm internal radius, and that they are at least 150mm away from the edge of the panel. This will help retain the integrity of the panel and prevent cracks or damage. An electrician should always be consulted before starting a project that involves working in and around outlets, air conditioning units or vents, lights or other appliances.
- To ensure long-term performance and prevent any warping, small expansion gaps must be left between the panels and any surrounding surfaces such as floors, ceilings, skirting boards etc, and between the panels themselves.

The following gap measurements are recommended:

- Wall to Floor/Ceiling - a 10mm expansion gap is required at the top and bottom of each panel, where the panel meets the floor and ceiling
- Between panels - minimum of 1-1.5mm
- Panel to Architrave - minimum of 5mm
- Full Run Wall - 1mm at both the start and finish edge for every 1 metre of wall length (Example: For a 4-metre wall, leave a 4mm gap in total - 2mm at each end.)
- If you are thinking about adding dado rails, make sure to plan out the height and if there are any obstacles such as doors or window frames. Wherever possible try to choose a height that will give you a clean line.
- Choose a paint that's suitable for interior use and is designed for pre-primed MDF surfaces. We recommend discussing these options with your local paint retailer and try a small test patch to confirm you are happy with the colour and finish.
- You can use either nails or screws to fix InnoWall panels in place. To avoid splitting the panels, it's a good idea to drill pilot holes first. For best results, use finishing nails or screws with a straight (parallel) thread.
- Skirting boards are a great way to cover expansion gaps as well as giving your space a clean, finished look. If you are using skirting boards to cover an expansion gap, make sure to place a small spacer between the skirting and the wall frame. This helps leave enough room for natural movement. When opting to use an L-shaped trim for a neater finish, attach the trim to the back of the InnoWall panel before fixing to the wall. This will also leave space for expansion. To achieve a tidy seamless finish where the skirting board meets the InnoWall panel, fill the expansion gap with flexible caulk.

# Guidelines for Plasterboard Installation

---

## 1. Measure Your Wall

Use a tape measure to find the width and height of your wall. This will help you figure out how many InnoWall panels you will need for your space.

## 2. Find the Wall Studs

Use a stud finder to find the studs (wooden beams) inside your wall. Mark each one with a pencil as you find them. They should be no more than 600mm apart. You will use these as fixing points for the wall panels.

## 3. First Panel Application

Begin at one corner of the wall and apply glue (construction adhesive) onto the pencil marks. Use spaces at the top and bottom of the panel to allow for a 10mm expansion gap. Put the first panel against the wall and use a level to check for straightness to ensure the panel is sitting flush on the wall.

Spacing Fixings - Fix the panels to the wall using nails or screws, spacing them about 200mm to 300mm apart, working from one side to the other, or from the middle outward.

Placement Guidelines - Make sure all fixings are at least 10mm from the edge of the panel and 25mm away from the corners. For any fixings along the edge, keep them at least 75mm from the corner.

Fixing Techniques - Do not over-tighten screws or hammer in nails too hard. Too much pressure can split the InnoWall panels.

Add the Next Panel. Apply the adhesive on the wall where the next panel will go (on the marked stud points). Slide the panel into the edge of the first panel - they will lock together easily for a seamless fit using the interlocking system. Check the panel is straight with your level. Nail or screw it into place repeating the process from the first panel.

## 4. Apply the Remaining Panels

Repeat the same steps for each new panel. When you get to the last panel, you might need to cut it to fit. Measure carefully, then cut the panel with a circular saw. Glue, slide it in, and fix it in place.

## 5. Finishing

Remove the spacers from the top and bottom of the panels. If you come across a power outlet or switch during application, always check with an electrician. Always ensure that your measurements are checked before cutting the panel to accommodate for the power outlet or electrical appliance. Finish your wall by applying putty (filler) to cover all nail or screw holes. Let the putty dry, then sand it smooth. If required install skirting boards to finish the wall. Finish with your chosen paint colour.

# Guidelines Steel or Timber Framing Installation

---

## 1. Measure Your Wall

Use a tape measure to find the width and height of your wall remembering to allow for an expansion gap at the top and bottom. This will help you figure out how many InnoWall panels you will need for your space.

## 2. Wall Framing Preparation

Make sure the wall studs are spaced no more than 600mm apart (or 450mm for commercial spaces). You'll be attaching the wall panels to these studs. Use a spirit level to check that the framing is straight. If any of your panels need to join up between studs, add a horizontal support (noggin) at approximately 700mm. If you are only covering part of the wall with a wall panel, add a noggin just below the top of the panel.

## 3. First Panel Application

Begin at one corner of the wall and apply glue (construction adhesive) to every stud/noggin. Put the first panel against the wall and use a level to check for straightness to ensure the panel is sitting flush on the wall. Use spaces at the top and bottom of the panel to allow for a 10mm expansion gap.

Spacing Fixings - Fix the panels to the wall using nails or screws, spacing them about 200mm to 300mm apart, working from one side to the other, or from the middle outward.

Placement Guidelines - Make sure all fixings are at least 10mm from the edge of the panel and 25mm away from the corners. For any fixings along the edge, keep them at least 75mm from the corner.

Fixing Techniques - Do not over-tighten screws or hammer in nails too hard. Too much pressure can split the InnoWall panels.

Add the Next Panel. Apply the adhesive on the wall where the next panel will go (on the marked stud points). Slide the panel into the edge of the first panel - they will lock together easily for a seamless fit using the interlocking system. Check the panel is straight with your level. Nail or screw it into place repeating the process from the first panel.

## 4. Apply the Remaining Panels

Repeat the same steps for each new panel. When you get to the last panel, you might need to cut it to fit. Measure carefully, then cut the panel with a circular saw. Glue, slide it in, and fix it in place.

## 5. Finishing

Remove the spacers from the top and bottom of the panels. If you come across a power outlet or switch during application, always check with an electrician. Always ensure that your measurements are checked before cutting the panel to accommodate for the power outlet. Finish your wall by applying putting (filler) to cover all nail or screw holes. Let the putty dry, then sand it smooth. If required install skirting boards to finish the wall. Finish with your chosen paint colour.

# Guidelines for Brick Walls or Masonry Installation

---

## 1. Measure Your Wall

Use a tape measure to find the width and height of your brick wall. This will help you figure out how many InnoWall panels you will need for your space. Remember to allow for expansion gaps at the top and bottom.

## 2. Wall Framing Preparation

InnoWall panels cannot be fitted directly to brick walls. Furring strips (mounting battens) need to be attached to the brick wall horizontally at 450mm apart to create a solid frame for fixing your panels. This also allows for ventilation behind the InnoWall panels. Attach each furring strip (or batten) to the brick wall using concrete nails or masonry fasteners. Make sure each one is straight by checking it with a spirit level, and that it is secure before proceeding with the panel installation.

## 3. First Panel Application

Begin at one corner of the wall and apply a generous amount of construction adhesive to every furring strip (or batten). Position your first panel on the wall ensuring you have spacers at the top and bottom of the panel to allow for a 10mm expansion gap. Use a level to check for straightness to ensure the panel is sitting flush on the wall.

Spacing Fixings - Fix the panels to the wall using nails or screws, spacing them about 500mm apart horizontally, working from one side to the other, or from the middle outward.

Placement Guidelines - Make sure all fixings are at least 10mm from the edge of the panel and 25mm away from the corners. For any fixings along the edge, keep them at least 75mm from the corner.

Fixing Techniques - Do not over-tighten screws or hammer in nails too hard. Too much pressure can split the InnoWall panels.

Add the Next Panel and slide the panel into the edge of the first panel - they will lock together easily for a seamless fit using the interlocking system. Check the panel is straight with your level. Nail or screw it into place repeating the process above.

## 4. Apply the Remaining Panels

Repeat the same steps for each new panel. When you get to the last panel, you might need to cut it to fit. Measure carefully, then cut the panel with a circular saw. Glue, slide it in, and fix it in place.

## 5. Finishing

Remove the spacers from the top and bottom of the panels. If you come across a power outlet or switch during application, always check with an electrician. Always ensure that your measurements are checked before cutting the panel to accommodate for the power outlet. Finish your wall by applying putty (filler) to cover all nail or screw holes. Let the putty dry, then sand it smooth. If required install skirting boards to finish the wall. Finish with your chosen paint colour.

# Guidelines for Horizontal Orientation Installation

---

InnoWall panels are designed for multi-directional installation, either vertically or horizontally. If you are planning to install them horizontally, there are a few extra things to consider.

- 1. Support** - Make sure your wall framework or battens are setup to support the panels when they are fitted sideways.
- 2. Join Locations** - The vertical ends (1220mm) of the horizontal panels don't have the interlocking system, so you will need a different method to join them - like leaving a small gap (an expressed joint) or covering the joins with a trim such as a dado rail.
- 3. Expansion Gaps** - Always leave a small gap at the floor and ceiling to allow for expansion and movement. We recommend leaving a 5mm gap between the panels, at the end of each panel or when meeting windows/door frames.
- 4. Installation tips** - Begin by installing the lower panels first, ensuring they are straight. Ensure you have spacers to allow for a 5mm expansion gap on the floor. Fix the panels to the wall studs or battens spacing the nails/screws 200mm to 300mm apart. Make sure fixings are 50mm from the side and 10mm from top and bottom.

Add the Next Panel and slide the panel into the edge of the first panel - they will lock together easily for a seamless fit using the interlocking system. Check the panel is straight with your level. Nail or screw it into place repeating the process above and continue with the rest of the panels. When you get to the last panel, you might need to cut it to fit. Measure carefully, then cut the panel with a circular saw. Glue, slide it in, and fix it in place.

- 5. Finishing** - Remove the spacers from the top and bottom of the panels. If you come across a power outlet or switch during application, always check with an electrician. Always ensure that your measurements are checked before cutting the panel to accommodate for the power outlet. Finish your wall by applying putty (filler) to cover all nail or screw holes. Let the putty dry, then sand it smooth. If required install skirting boards to finish the wall. Finish with your chosen paint colour.

# Guidelines for Ceiling Installation

---

InnoWall panels are suitable for ceiling installation and offer a versatile, clean finish when installed correctly. Follow these guidelines to ensure a professional and long-lasting result.

- 1. Before you Start** - Check that your ceiling structure has a truss and batten construction. Battens should be spaced no more than 450mm apart. Joists should be spaced no more than 900mm apart. If battens are not present, you'll need to install these before proceeding.
- 2. Planning your layout** - To avoid visible panel joins, a recessed or lowered ceiling section is recommended. Remember to leave a 5mm expansion gap around the perimeter of the ceiling. Allow 1-1.5mm gap between each panel. Around lights, vents, or ducts, make sure to seal all edges of the panels to prevent moisture damage.
- 3. Cutting the panels** - When using a power saw, place the panel face down. When using a handsaw, cut with the face side up to prevent chipping.
- 4. Installation** - Apply construction adhesive in lines across each batten, space no more than 600mm apart. Start from one end of the ceiling and work across in one direction. Fixing the first panel into place using nails or screws. Make sure all fixings are at least 10mm from the edge of the panel and 25mm away from the corners. For any fixings along the edge, keep them at least 75mm from the corner.

When you're finishing a room, there are a few simple ways to tidy the join between the wall and ceiling such as timber or plaster cornices, timber trims or a modern square set finish, which involves leaving a small 5mm gap to create a crisp shadow line.

- 5. Finishing** - Finish your ceiling by applying putty (filler) to cover all nail or screw holes. Let the putty dry, then sand it smooth and finish with your chosen paint colour.

# Internal Moisture Area Guidelines

---

InnoWall panels are not suitable for walls that are directly exposed to water or splash zones. Installing them in these areas will void the warranty.

## **What is a splash zone?**

A splash zone is any area where water directly hits the wall. This includes: Showers, around bathrooms, behind sinks in bathrooms, kitchens, or laundries and high-humidity areas like saunas, indoor pools, or industrial wet zones.

Panels can be installed in the following areas, as long as these simple guidelines are followed and water does not come in contact with the wall. Always ensure the area is well ventilated and suitable before installation.

- 1. Above a bathroom vanity** - Panels can be installed above a bathroom vanity providing there is a splash back at least 150mm high, and the basin is more than 75mm away from the wall.
- 2. Next to an enclosed shower** - Panels can be installed outside an enclosed shower providing the panel is at least 1.5metres away from the shower head, and the shower is fully enclosed.
- 3. Laundry & Kitchen areas** - Panels can be installed on a laundry and kitchen wall providing there is a splash back that is at least 150mm high and the sink or countertop is more than 75mm from the wall corner.

# Fireplace Guidelines

---

InnoWall panels are made from MDF, which is classed as a Group 3 combustible material. This means they can burn or become damaged if placed too close to heat. Damage from ash, soot, or smoke is not covered under warranty and should be taken into account before accessing your installation options.

InnoWall panels may be installed in certain areas around fireplaces, providing the following guidelines and clearance requirements are met.

## 1. Freestanding Fireplaces

When installing InnoWall panels behind a freestanding fireplace, ensure a minimum clearance of at least 500mm (half a metre) between the rear of the firebox and the back wall.

## 2. Open Hearth or Closed Fireplaces (with visible flame)

Do not use InnoWall panels on the following:

- The hearth (floor area in front of the fireplace)
- The plinth (raised area)
- Trim panels or pillars
- Mantelpiece
- Directly around the fireplace

You can install InnoWall panels on the walls to the left and right of the fireplace ensuring there is a space of at least 500mm from the outer edge of the firebox to the edge of panel. Never install InnoWall panels above the mantelpiece, on the hearth or directly around the fireplace.

## 3. Enclosed Fireboxes (fully sealed fireplaces)

InnoWall panels are able to be installed around the outside and up to the sealed edges of a fully enclosed firebox.

**IMPORTANT:** Before you begin with any installation in areas with a fireplace always check with your local fireplace installer or building professional before starting your project. Make sure your installation meets the New Zealand Building Code and New Zealand Safety Standards. Also ensure that your fireplace is serviced and cleaned regularly by a certified fireplace installer. Failure to do this will void the warranty.

## Finishing Preparation & Tips

---

InnoWall panels are made from moisture resistant fibreboard (MDF) and come pre-primed on the profile side with a water-based primer - ready for your paint!

- 1. Prepare Your wall** - Before painting, ensure that you prepare your wall by filling all nail or screw holes and any imperfections with putty. Allow putty to completely dry.
- 2. Sand Smooth** - Lightly sand all filled areas and panel surfaces using a fine grit sandpaper to create a smooth base for painting. Don't sand too hard - over-sanding can damage the panels and may void your warranty.
- 3. Clean Off Dust** - Use a soft brush or dry cloth to gently remove all sanding dust and dust particles. Do not use water, oil, or any solvents to clean the panels.
- 4. Paint** - Now you're ready to paint! Choose a good-quality interior paint that's suitable for pre-primed MDF. If you're unsure, ask your local paint store for advice. Try a small test patch first to make sure you are happy with the colour and finish.

## Warranty & Important Information

---

InnoWall panels carry a 7-year warranty. It applies to defects which have arisen solely from faulty materials or workmanship in the products. It does not apply to other defects which may have arisen as a result of, with limitation, the following: inadequate ventilation, accidental damage, abuse, misuse, maltreatment, abnormal stress or strain, harsh or adverse weather conditions, including excessive water, or neglect of any kind. This warranty does not extend to or cover any paint, coating, or finish applied to the wall panels.

To make a warranty claim or for more information refer to [www.newtech.co.nz/warranty](http://www.newtech.co.nz/warranty) for the full terms and conditions.

- Innowall Panels must be acclimatised in the installation environment and must be stored for at least 48 hours before installing.
- Ensure the installation area is well-ventilated, especially when installing onto timber substrates, to allow the panels to breathe. Failure to follow these steps may result in movement such as expansion or contraction and will void the product warranty.
- InnoWall Panels are designed for fixed interior walls and ceiling applications in dry, no-splash zones. They are not suitable for flooring, sliding doors, cabinetry or any exterior areas. Do not install panels over existing timber panelling, hardboard, tiles, cork, stone, textiles or wallpaper. Installation should only be carried out on surfaces and areas specially outlined in these instructions.
- We recommend that a qualified tradesperson install this product and that it is installed to a professional standard.



**Head Office:** 30 Mill Road, Whanganui  
0800 728 662 | [kitchens@newtech.co.nz](mailto:kitchens@newtech.co.nz)

**Auckland Showroom:** 525 Great South Road, Penrose, Auckland  
09 930 6200 | [aucklandshowroom@newtech.co.nz](mailto:aucklandshowroom@newtech.co.nz)

**Palmerston North Showroom:** 699 Main Street, Palmerston North  
06 241 8072 | [palmerstonnorthshowroom@newtech.co.nz](mailto:palmerstonnorthshowroom@newtech.co.nz)

**Christchurch Showroom:** 65 Blenheim Road, Addington, Christchurch  
03 242 0700 | [christchurchshowroom@newtech.co.nz](mailto:christchurchshowroom@newtech.co.nz)

**0800 728 662 | [WWW.NEWTECH.CO.NZ](http://WWW.NEWTECH.CO.NZ)**

