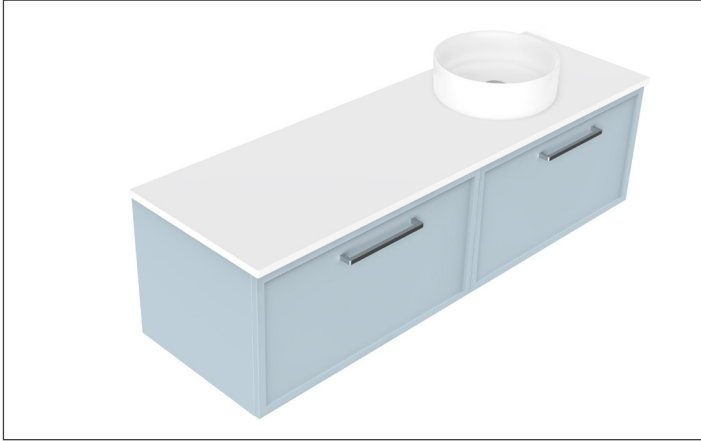


# SPECIFICATION SHEET

## Francisco Luxe 1500 2-Drawer Right Offset Basin Wall Hung Vanity



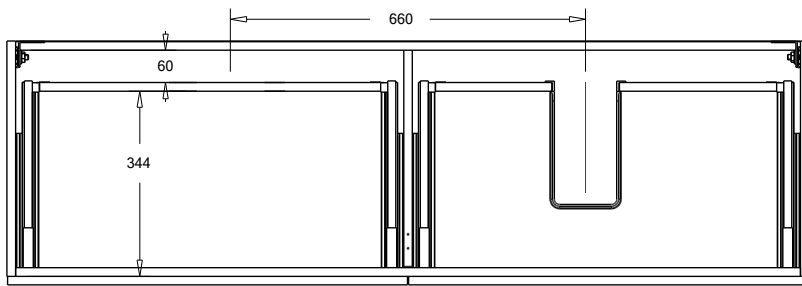
### Features

- 2-Drawer Wall Hung Vanity - Colour options below
- Full Extension Soft Close Drawers with Handles - Handle upgrade options available
- Designer Drawer Fronts - Four Drawer Front options
- Dimensions: H420 x W1500 x D465
- A variety of slab top options

*Note: Vessel basins are purchased separately.  
Visit [www.newtech.co.nz](http://www.newtech.co.nz) for the full range of vessel basin options.*

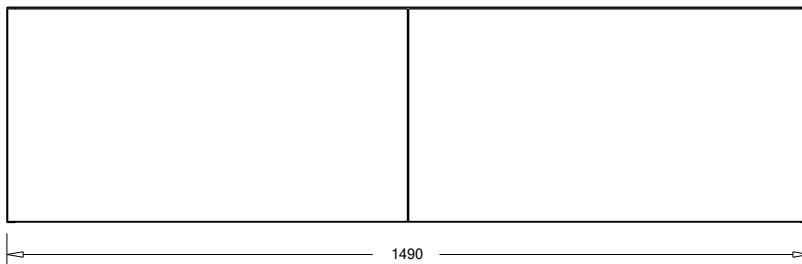
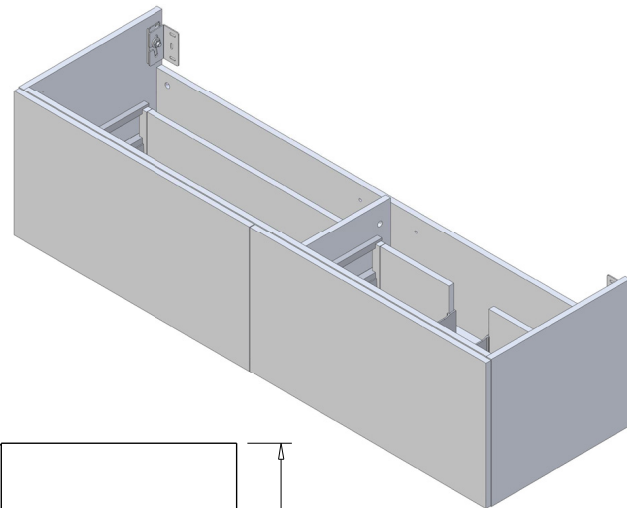
### Technical Details

Note: All measurements shown are in millimetres. Sizes are nominal.

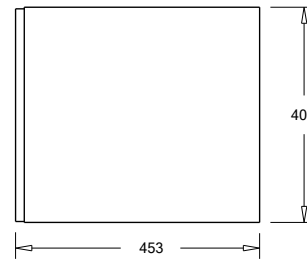


Note: Full Drawer Box on Left Hand Side

TOP VIEW



FRONT VIEW

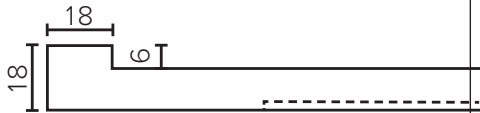
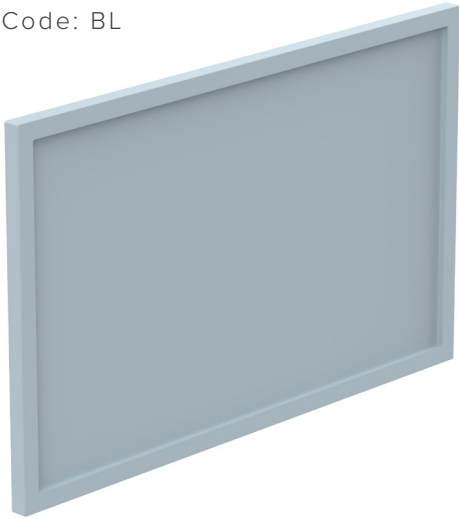


SIDE VIEW

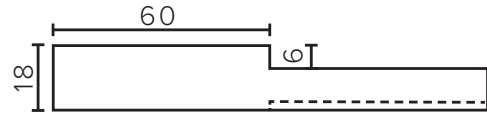
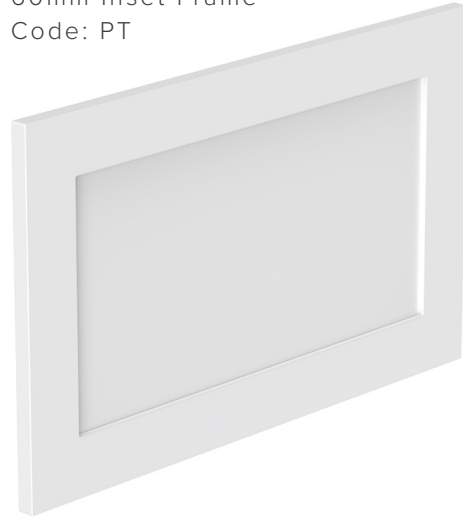
# SPECIFICATION SHEET

## Francisco Luxe Designer Drawer Fronts

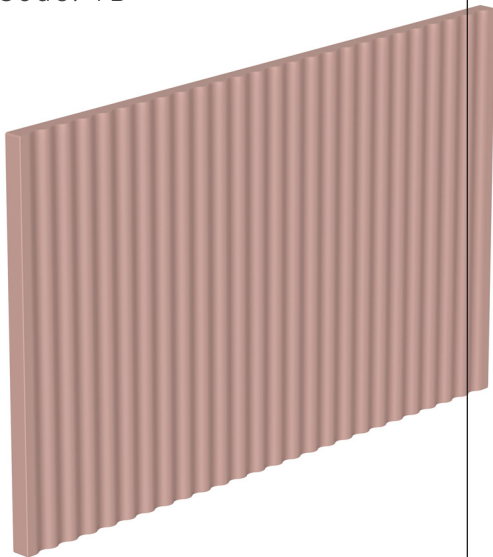
BARNESLEY  
18mm Inset Frame  
Code: BL



PRESTON  
60mm Inset Frame  
Code: PT



TURNBERRY  
Ripple Design Panel  
Code: TB



NEWPORT  
V-Groove Panels  
Code: NP

