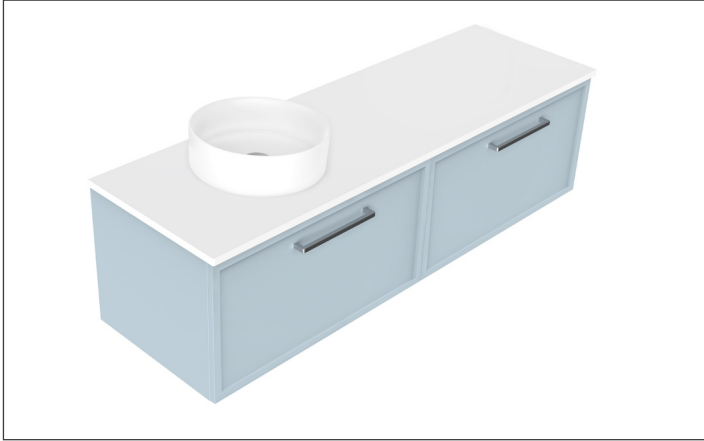


SPECIFICATION SHEET

Francisco Luxe 1500 2-Drawer Left Offset Basin Wall Hung Vanity



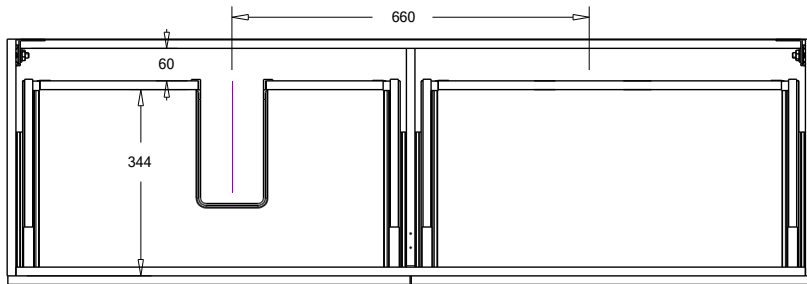
Features

- 2-Drawer Wall Hung Vanity - Colour options below
- Full Extension Soft Close Drawers with Handles - Handle upgrade options available
- Designer Drawer Fronts - Four Drawer Front options
- Dimensions: H420 x W1500 x D465
- A variety of slab top options

*Note: Vessel basins are purchased separately.
Visit www.newtech.co.nz for the full range of vessel basin options.*

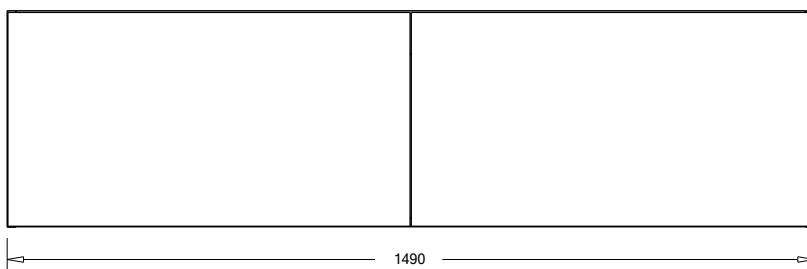
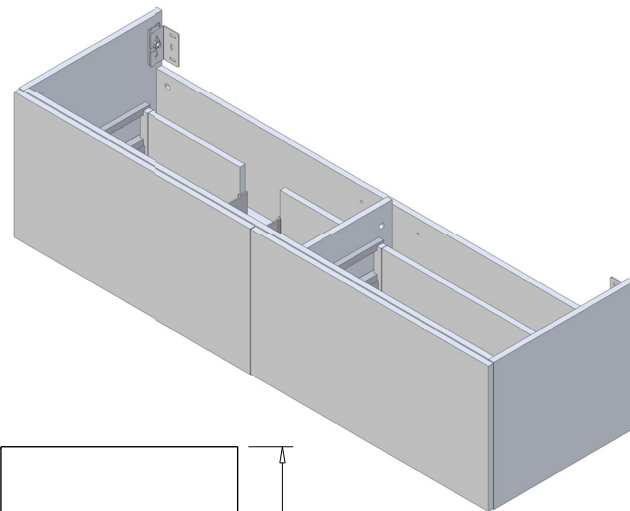
Technical Details

Note: All measurements shown are in millimetres. Sizes are nominal.

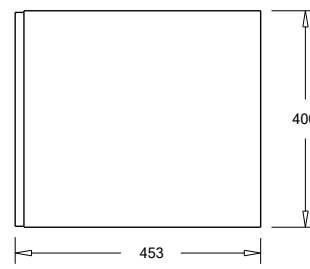


Note: Full Drawer Box on Right Hand Side

TOP VIEW



FRONT VIEW

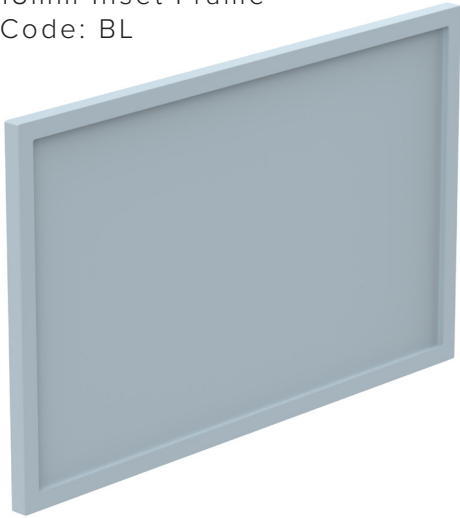


SIDE VIEW

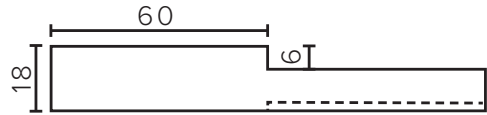
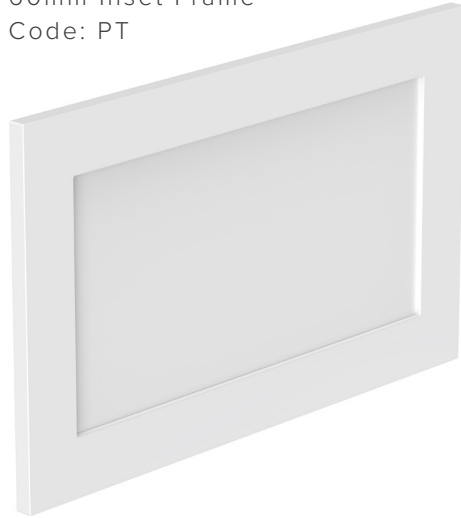
SPECIFICATION SHEET

Francisco Luxe Designer Drawer Fronts

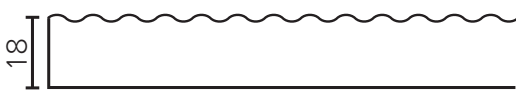
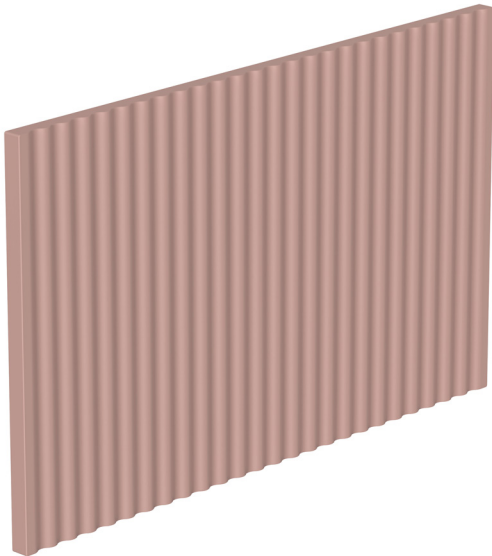
BARNESLEY
18mm Inset Frame
Code: BL



PRESTON
60mm Inset Frame
Code: PT



TURNBERRY
Ripple Design Panel
Code: TB



NEWPORT
V-Groove Panels
Code: NP

