

SPECIFICATION SHEET

Francisco 600 1-Drawer Wall Hung Vanity

Newtech Code: 4714



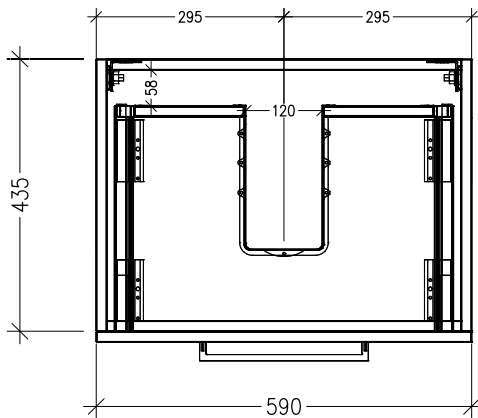
Features

- 1-Drawer Wall Hung Vanity with Inset Basin
- Single Inset Basin
- Full Extension Soft Close Drawers with Handle - *Handle upgrade options available*
- Designer Drawer Front
- Dimensions: H420 x W600 x D465

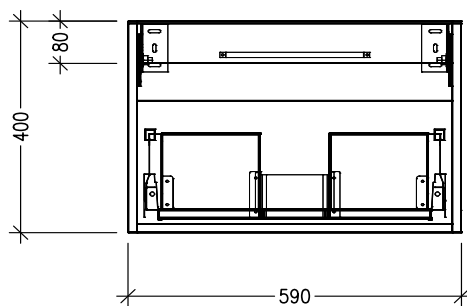
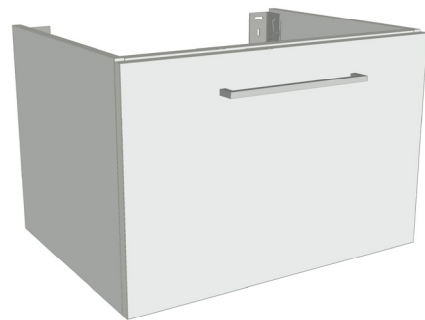
See www.newtech.co.nz for the full range of basin, colour and handle options.

Technical Details

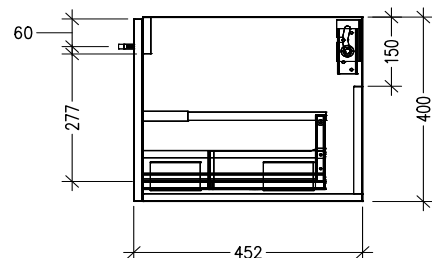
Note: All measurements shown are in millimetres. Sizes are nominal.



TOP VIEW



FRONT VIEW

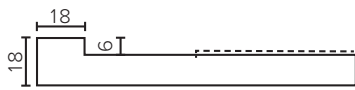
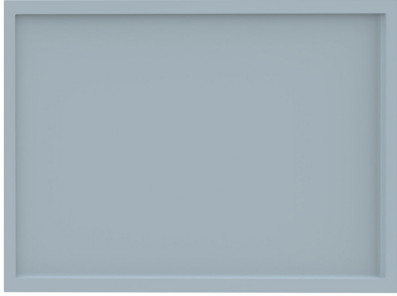


SIDE VIEW

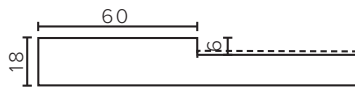
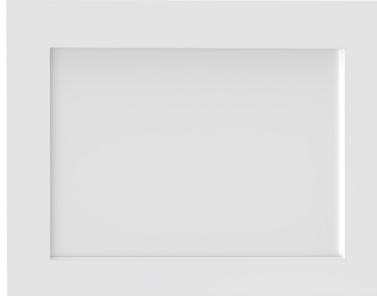
SPECIFICATION SHEET

Designer Drawer/Door Fronts

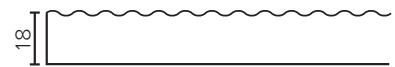
BARNSLEY
18mm Inset Frame
Code: BL



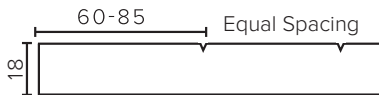
PRESTON
60mm Inset Frame
Code: PT



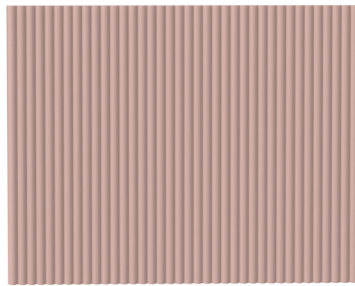
TURNBERRY
Ripple Design
Code: TB



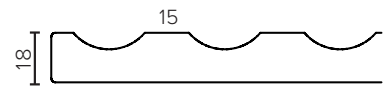
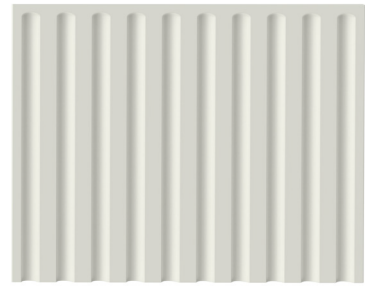
NEWPORT
V-Groove Panels
Code: NP



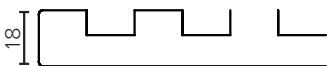
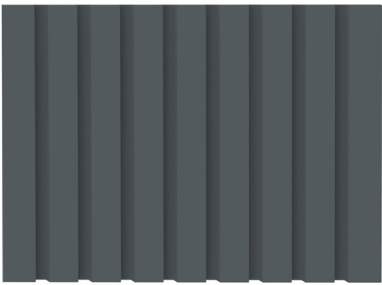
MIAMI
Little Wave
Code: MI



LAUREL
Fluted Lines
Code: LU



LINCOLN
Fence Style
Code: LN



ASPEN
Scalloped Wave
Code: AP

