

SPECIFICATION SHEET

Francisco 1500 2-Drawer Wall Hung Vanity

Newtech Code: 4738



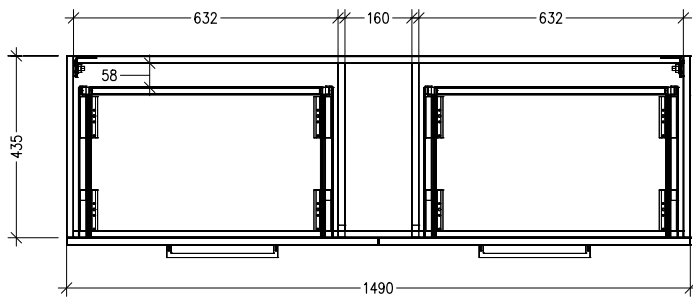
Features

- 2-Drawer Wall Hung Vanity with Inset Basin
- Single Inset Basin
- Full Extension Soft Close Drawers with Handle - *Handle upgrade options available*
- Designer Drawer Fronts
- Dimensions: H420 x W1500 x D465

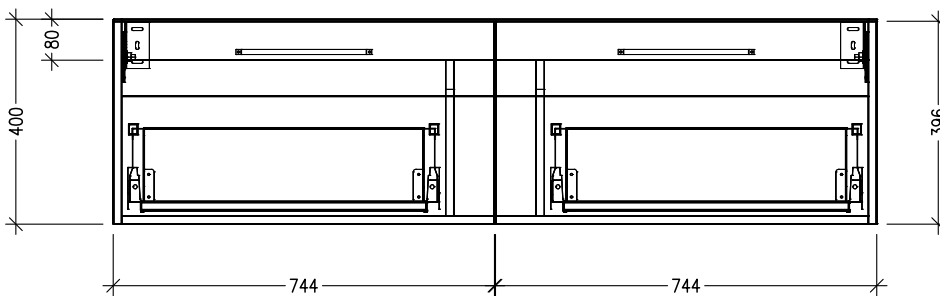
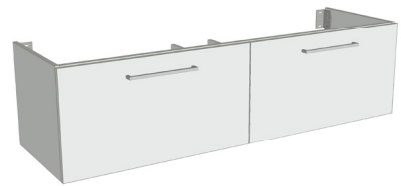
See www.newtech.co.nz for the full range of basin, colour and Handle options.

Technical Details

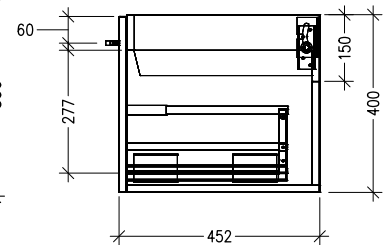
Note: All measurements shown are in millimetres. Sizes are nominal.



TOP VIEW



FRONT VIEW



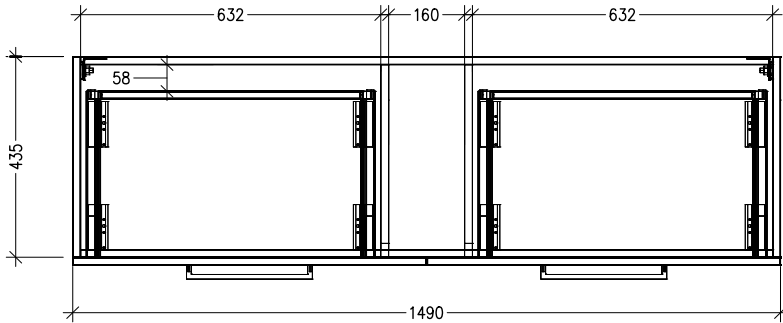
SIDE VIEW

SPECIFICATION SHEET

Francisco 1500 4-Drawer Wall Hung Vanity with cosmetic drawers

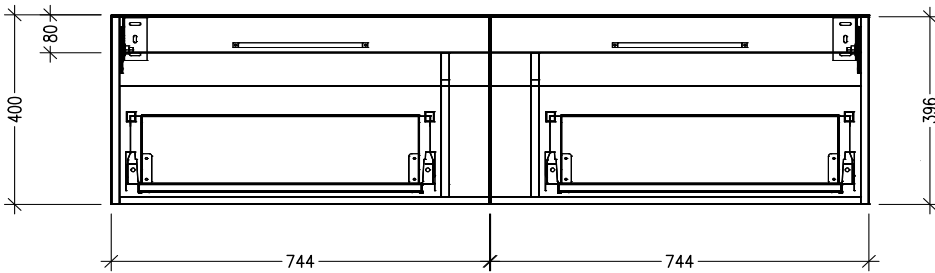
Code: COSLR,COSL,COSR

Technical Details

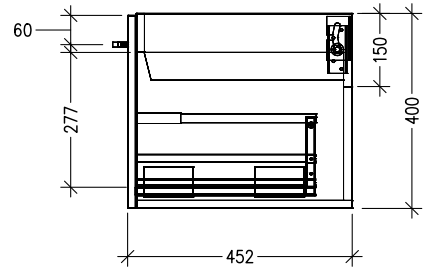


TOP VIEW

Note: Drawings shown are for COSLR. When COSL or COSR is selected please ignore the opposite cosmetic drawer in the drawings as the opposite side would be a full depth drawer.



FRONT VIEW



SIDE VIEW