

SPECIFICATION SHEET

750 Angolo Curved Wall Hung Vanity (1 Drawer)

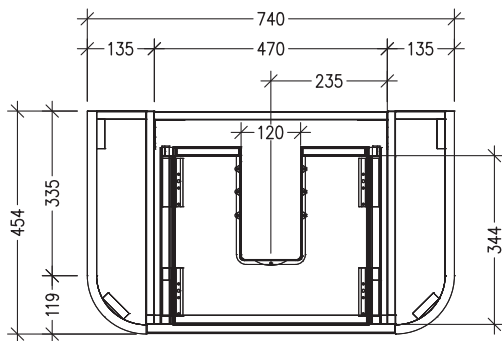
Newtech Code: 12001



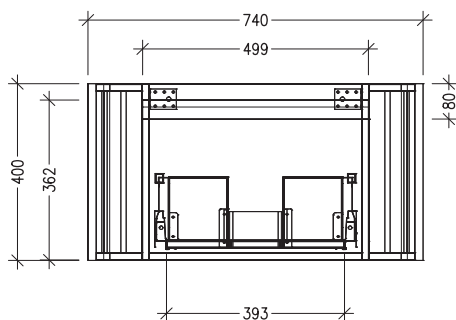
Features

- 1 Drawer
- Soft close drawer runners
- Drawers with handle or negative detail
- Made of Oak Veener on Birch Ply
- Internal Carcass Option
Matte White - Standard
Anthracite - Upgrade cost applies
- Dimensions: H420 x W750 x D465

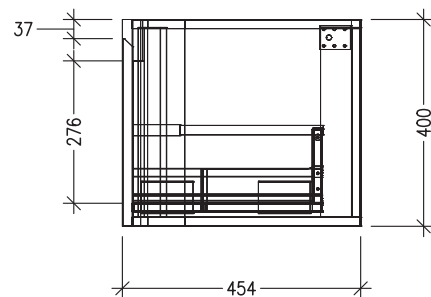
Technical Details



TOP VIEW



FRONT VIEW



SIDE VIEW

Note: Drawings shown are for negative detail cabinets. When handle option is selected the drawer height will be 395mm.