

Inline Exhaust Fan

Codes: 8172 (100mm), 8173 (125mm),
8174 (150mm), 8175 (200mm)

exclusive to Newtech



Quiet, powerful and a compact solution for a variety of domestic and commercial applications. Featuring a unique easy fix mounting system which simplifies onsite installation, saving time and money.

Warranty

- 2 years

Applications and Installation

- To be used in conjunction with internal grilles and ducting (not included)
- Suitable for long ducting lengths (up to 20m)*
- Suitable for single or multiple rooms
- Suitable for multiple room applications including:
 - Bathrooms
 - Laundries
 - Kitchens and range hoods
 - Garbage exhaust
 - Supply air systems
- Can be installed by a home handyman or industry professional (electrician or air conditioning installer)

* Correctly sized ducting

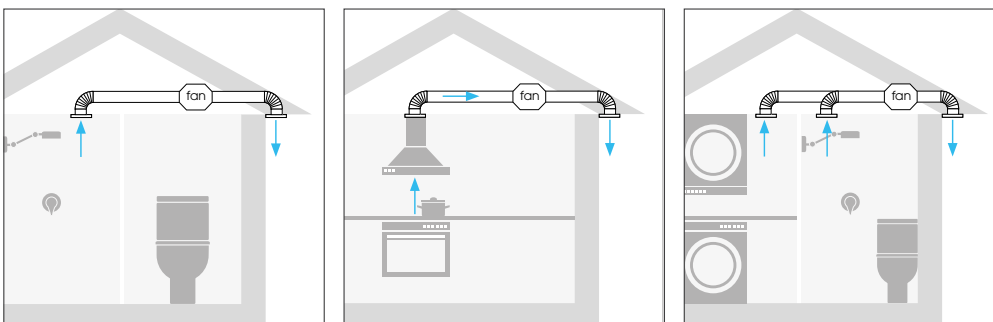
Manufacturer

expella™

Features and Benefits

- Compact design
- Powerful mixed flow fan that is suitable for single or multi-point inline ventilation systems where high performance is required
- Available in 4 sizes
- Effective with long ducting lengths (up to 20m)1
- 2 speed motor with external high/low speed switch
- Low wattage motor for energy efficiency and quieter operation
- Quick clip mounting bracket, 3 pin plug and 1.5m cord for easy on-site installation
- Removable motor for easy servicing and maintenance

Applications



Inline Exhaust Fan

Codes: 8172 (100mm), 8173 (125mm),
8174 (150mm), 8175 (200mm)

exclusive to Newtech

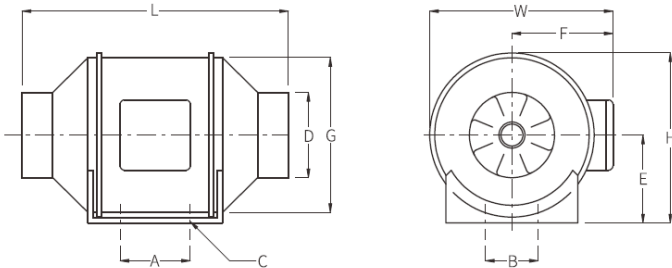
Specifications

Model	Item code	Duct Size (mm)	Volts	W	Volume m ³ /hr	Volume L/s	Pa (max)	dB(A)*	Weight (kg)
EMF 100	8172	100	240	26	198	55	156	31	1.5
				23	165	45	131	26	
EMF 125	8173	125	240	33	284	79	159	31	1.5
				28	248	69	106	26	
EMF 150	8174	150	240	54	530	147	300	33	2.6
				44	410	113	240	29	
EMF 200	8175	200	240	128	840	233	352	63	4.9
				123	690	192	274	55	

*Measured at 3 metres

Dimensions

Model	A	B	C	ØD	E	F	G	L	W	H
EMF 100	80	60	4	97	99	116	163	302	204	195
EMF 125	80	60	4	123	99	116	163	257	204	195
EMF 150	80	60	4	147	109	127	187	313	204	208
EMF 200	100	94	4	197	125	137	205	302	204	237



Performance

