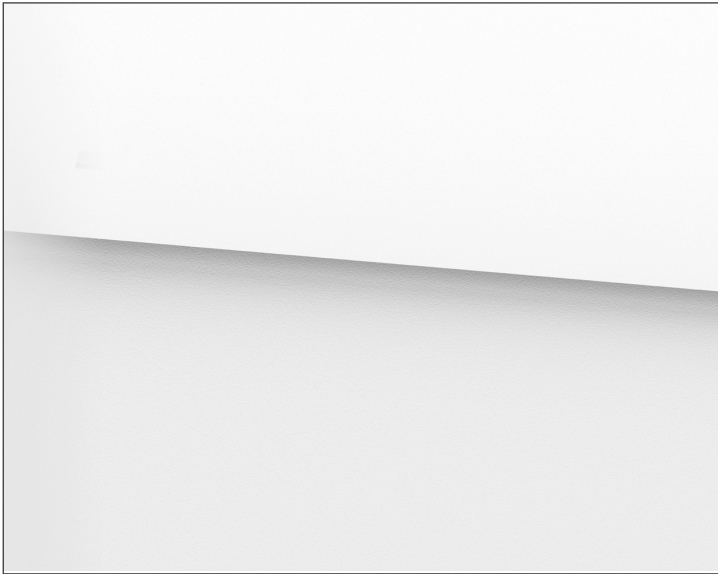


Shadowline Wall & Slot Diffuser Pro

Code: 8159

exclusive to Newtech



The Shadowline Diffuser is an internal ceiling grille that allows air to be channelled through the ventilation system. This product is designed to be discreet – almost invisible, sitting at the wall/ceiling junction with a narrow slot set into the ceiling allowing air extraction from a domestic wet room.

Warranty

- 5 years

Features and Benefits

- Aluminium profile designed for optimal airflow and efficiency
- Creates unique detail between the wall and ceiling whilst making the exhaust system invisible
- Cut to length to suit any wall size
- Shadowline Diffuser creates a rigid structure that secures the ceiling sheet
- Multiple fixing options using clip in fasteners and is compatible with Rondo suspended ceilings
- Low profile for restricted ceiling space
- Can be fitted with a typical LED strip light*
- Designed and made in Australia

Options

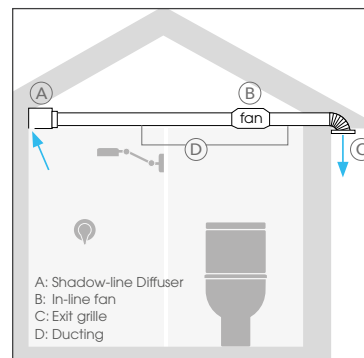
- Insulated option for ducted air conditioning systems

Manufacturer

expella™

Applications and Installation

- To be used in conjunction with an inline fan such as the AXCTP (recommended) and ducting.
- Suitable for supply and exhaust applications
- Suitable for interior applications including:
 - Bathroom exhaust
 - Laundries
 - General kitchen ventilation
- Can be installed by a home handyman or industry professional (electrician or air-conditioning installer)

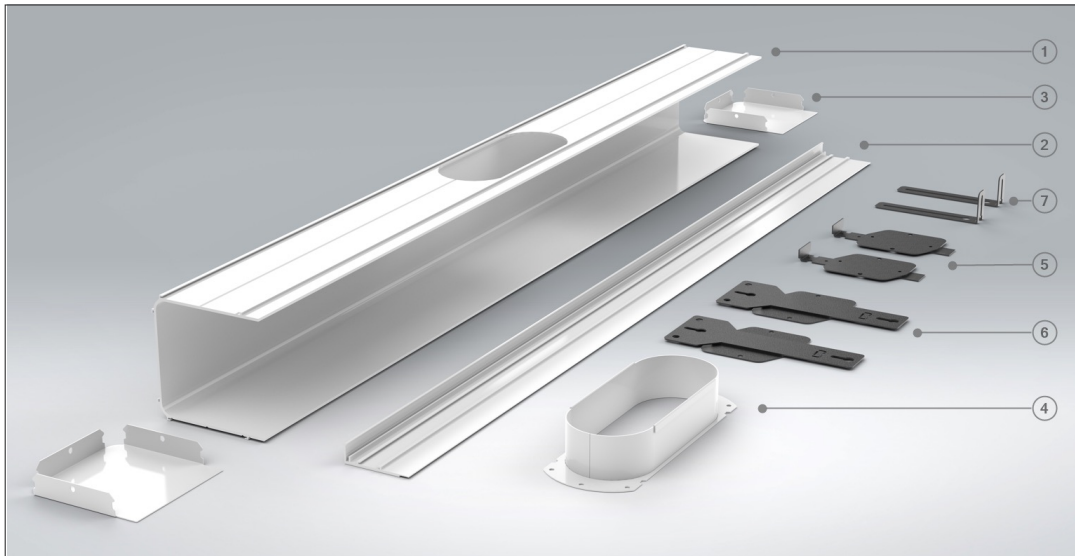


Shadowline Wall & Slot Diffuser Pro

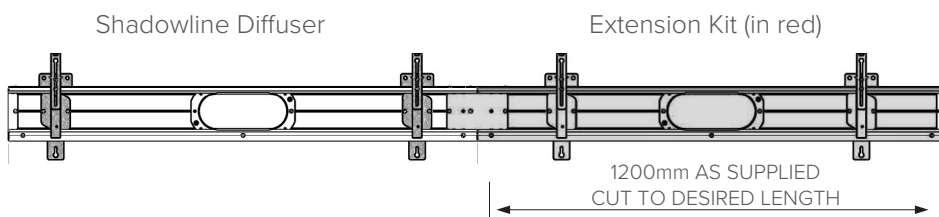
Code: 8159

exclusive to Newtech

Product Detail



| Item | Part # | Description | Qty |
|------|---------|---|-----|
| 1 | 06-0003 | Extrusion 17-0001, Cut, Machined and powder coated, Shadow Line | 1 |
| 2 | 06-0004 | Extrusion 17-0003, Cut to length and powder coated, Shadow Line | 1 |
| 3 | 05-0021 | End Cap, Extrusion, Shadow Line | 2 |
| 4 | 05-0019 | Spigot, Oval (150mm Flex) | 1 |
| 5 | 05-0025 | Front Bracket, 110x110 Extrusion | 2 |
| 6 | 05-0024 | Rear Bracket, 110x110 Extrusion | 2 |
| 7 | 05-0012 | Bracket, Adjustable, Shadow Line | 2 |
| 8 | 15-0011 | Screw, Self-tapping, Pan Head Philips, 6G x 1/4", Zinc | 20 |



Performance

Shadowline Wall Diffuser

