

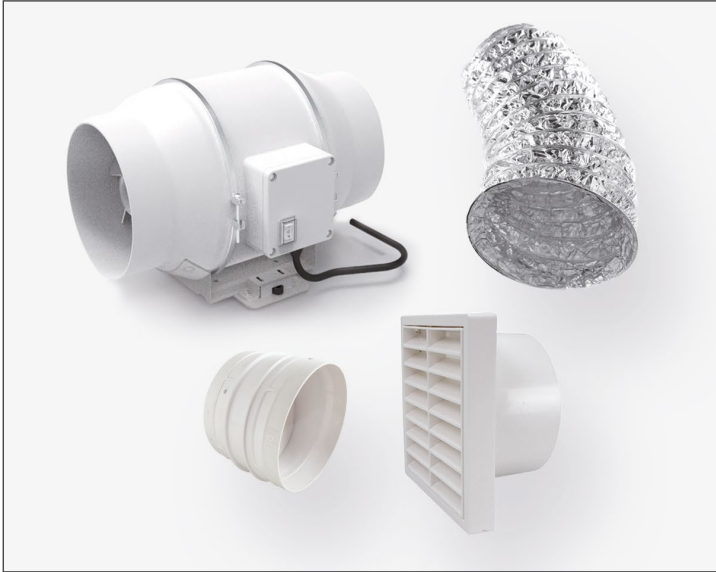
INSTALLATION INSTRUCTIONS

Standard Inline Exhaust Kit

Code: 8150

expella™
VENTILATION
SERIES

exclusive to Newtech



Contents

- 1x Inline Exhaust Fan (150mm diameter)
- 6m 150mm diameter flexible duct (3 zero)
- 1 x 150mm Non return damper
- 150mm external grille (plastic)
- Cable ties (x4)
- 4 meters silver tape

INSTALLATION

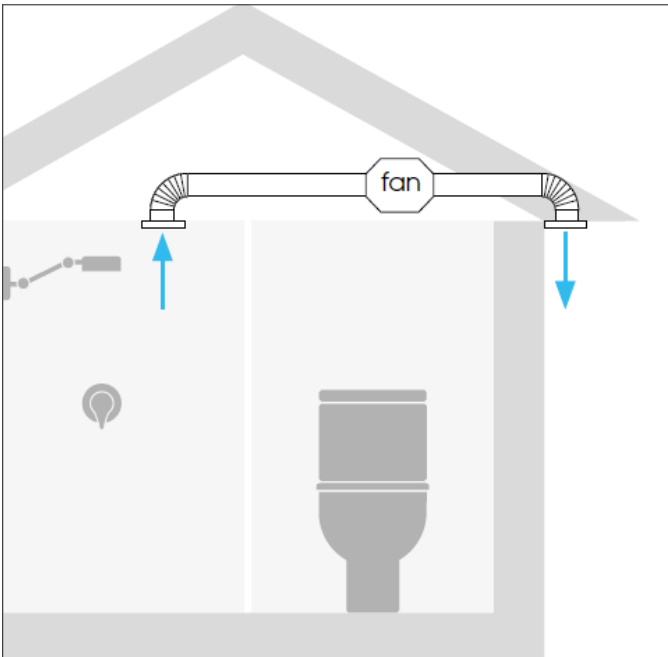


Image 2. Intake grille not included and shown for schematic purposes. Skeleton kit allows choice of intake grille (sold separately)

Step 1 – Install Fan. Fix fan securely to soffit of concrete slab, timber beam or rafter. Position the fan between the proposed intake grille location and the discharge point. Ensure fan is oriented in current direction (arrow on fan depicts direction of airflow and should point to discharge point). Fan should also be installed in an accessible location (ie. accessible area in roof space or via access panel). Connect Non return damper to fan ensuring air direction arrows correspond with arrows on fan.

Step 2 – Connect flexible ducting to both sides of fan using silver tape and cable ties provided. Duct should be pulled as tight as possible with minimal bends. Avoid any bends to ductwork within 450mm on either side of fan. Any bend in ductwork within 450mm will impact fan performance.

Step 3 – Install exit grille in either wall or eave and then connect flexible duct to exit grille spigot.

Step 4 – Depending on chosen intake grille (Linear slot or Shadowline diffuser), install plenum box and connect to intake duct work prior to installing the ceiling.

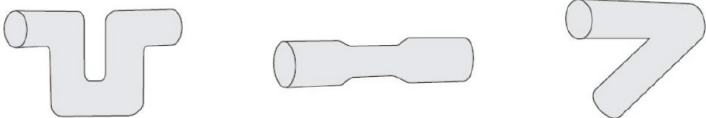
Step 5 – Install ceiling diffuser or fascia (linear slot grille) after ceiling has been installed and painted. Follow installation instructions for ceiling diffuser.

Standard Inline Exhaust Kit

Code: 8150

WARNING

1. Installation and wiring should be carried out by qualified electrician.
2. This fan is not intended for use by persons (including children) with reduced physical, sensory or mental capabilities, or lack of experience and knowledge, unless they have been given supervision or instruction concerning use of the appliance by a person responsible for their safety.
3. Children should be supervised to ensure that they do not play with the appliance.
4. If the power cord is damaged, the cord must be replaced by a qualified electrician in order to avoid a hazard.
5. Fan should be installed more than 2.1m above ground.
6. The minimum distance of the surrounding structure should be as follows:
 - a. 15mm from the plastic enclosure.
 - b. 30mm from the air outlet spigot.
7. Do not reduce diameter of ducting from the outlet of the fan.
8. Ensure there are no bends in the ductwork within 450mm on either side of the fan. Placing a bend within this distance will significantly restrict fan performance.
9. Keep duct work as straight as possible. Avoid bends and damage to duct work as illustrated below:



10. Avoid placing any pressure on fan wheel during installation and cleaning.
11. If unusual oscillating movement is observed, immediately stop using the fan and contact the manufacturer, it's service agent or suitably qualified persons.
12. Exhaust fans may adversely affect the safe operation of appliances burning gas or other fuels (including those in other rooms) due to back flow of combustion gases. These gases can potentially result in carbon monoxide poisoning. After installation of an exhaust fan such as a partition fan or duct fan the operation of flued gas appliances should be tested by a competent person to ensure that back flow of combustion gases does not occur.

MAINTENANCE AND CLEANING:

Cleaning of the diffuser should be undertaken when there is significant build-up of dust visible on the intake of the diffuser.


WARRANTY

2 year warranty from date of purchase

IMPORTANT
FOR MAXIMUM PERFORMANCE
PLEASE TRY TO:

- Avoid any duct bends within 40cm either side of the fan

NO BEND ZONE



FAN

- Avoid any bends over 90°
- Ensure flexible duct is not squashed

CONTACT US